



An ISO 9001 Certified Company



We Provide High Quality
Customized Cable Gland

National Price List Dt. 09-09-2022



MFRS. : BRASS CABLE GLAND & ELECTRICAL WIRING ACCESSORIES.



HMI MAKE BRASS CABLE GLANDS

VALUABLE CLIENTS



OUR MISSION

We will create a great place to work by inspiring our people to continuously innovate and bring greater value to our customers and environment, thereby enhancing stakeholder value.



OUR VISION

Enhance and strengthen our leadership position in wires and cables, Continue to invest in technology to improve operational efficiencies, customer satisfaction, and sales and strengthen brand recognition.



HMI MAKE BRASS CABLE GLANDS

SINGLE COMPRESSION BRASS CABLE GLAND

DOUBLE COMPRESSION MEDIUM DUTY BRASS CABLE GLANDS



Suitable Cable OD (MM)	Size mm	Inch	NIPPLE THREAD ET	RATE PER PCS	Packing Per Box
8.00 - 12.0	10MM	(3/8")	5/8"	39.00	168
12.5 - 15.5	12MM	(1/2")	5/8"	45.00	126
12.5 - 15.5	16MM	(5/8")	3/4"	45.00	126
16.0 - 18.0	19MM	(3/4")	3/4"	51.00	108
18.5 - 20.0	22MM	(7/8")	3/4"	67.00	84
20.5 - 23.5	25MM	(1")	1"	78.00	120
24.0 - 27.0	28MM	(1.1/8")	1.1/8"	119.00	40
27.5 - 30.0	32MM	(1.1/4")	1.1/4"	132.00	30
30.5 - 34.0	35MM	(1.3/8")	1.3/8"	172.00	30
34.5 - 38.0	38MM	(1.1/2")	1.1/2"	216.00	22
38.5 - 43.0	45MM	(1.3/4")	1.3/4"	259.00	14
43.5 - 50.0	50MM	(2")	2"	332.00	12
50.5 - 56.0	57MM	(2.1/4")	2.1/4"	424.00	8
56.5 - 60.0	63MM	(2.1/2")	2.1/2"	502.00	10
60.5 - 68.0	70MM	(2.3/4")	2.3/4"	600.00	4
68.5 - 74.0	75MM	(3")	3"	678.00	4
74.5 - 79.0	82MM	(3.1/4")	3.1/4"	851.00	6
79.5 - 83.0	88MM	(3.1/2")	3.1/2"	1001.00	5
83.5 - 96.0	100MM	(4")	4"	1260.00	3

Suitable Cable OD (MM)	Size mm	Inch	NIPPLE THREAD ET	RATE PER PCS	Packing Per Box	Pvc Shroud Price	Brass Earth Tag Price
7.00 - 10.0	10MM	(3/8")	1/2"	164.00	70	9.00	16.00
10.5 - 15.5	12MM	(1/2")	5/8"	181.00	40	9.00	16.00
16.0 - 16.5	16MM	(5/8")	3/4"	200.00	30	10.00	16.00
17.0 - 18.5	19MM	(3/4")	3/4"	224.00	30	10.00	16.00
19.0 - 20.0	22MM	(7/8")	3/4"	284.00	28	10.00	16.00
20.5 - 23.5	25MM	(1")	1"	318.00	25	14.00	22.00
24.0 - 27.0	28MM	(1.1/8")	1.1/8"	405.00	15	17.00	32.00
27.5 - 31.0	32MM	(1.1/4")	1.1/4"	524.00	12	21.00	32.00
31.5 - 34.0	35MM	(1.3/8")	1.1/2"	625.00	11	32.00	45.00
34.5 - 38.0	38MM	(1.1/2")	1.1/2"	727.00	16	40.00	45.00
38.5 - 44.0	45MM	(1.3/4")	2"	1012.00	8	48.00	54.00
44.5 - 50.0	50MM	(2")	2"	1160.00	8	48.00	54.00
50.5 - 55.0	57MM	(2.1/4")	2.1/4"	1347.00	6	56.00	87.00
55.5 - 61.0	63MM	(2.1/2")	2.1/2"	1857.00	4	81.00	87.00
62.0 - 68.0	70MM	(2.3/4")	2.3/4"	2105.00	4	98.00	126.00
68.5 - 73.0	75MM	(3")	3"	2577.00	2	103.00	126.00
73.5 - 79.0	82MM	(3.1/4")	3.1/4"	2985.00	2	116.00	243.00
79.5 - 84.0	88MM	(3.1/2")	3.1/2"	3871.00	1	129.00	243.00
84.5 - 94.0	100MM	(4")	4"	5242.00	1	145.00	284.00

NOTES : OUR CABLE GLANDS INSIST FOR LASAR MARKING WITH HOLOGRAM SECURITY LABLE FOR THE GENUINENESS OF OUR PRODUCTS



HMI MAKE BRASS CABLE GLANDS

**WEATHER PROOF DOUBLE COMPRESSION
BRASS CABLE GLANDS-HMI W (CIMFR APPROVED)
FOR ARMORED CABLES**

**FLAME PROOF DOUBLE COMPRESSION BRASS CABLE GLANDS-
HMI F (CIMFR APPROVED)
FOR ARMORED CABLES GAS GROUP - I, II A & II B TYPE**



Suitable Cable OD (MM)	Size Code	NIPPLE THREAD ET	RATE PER PCS	Packing Per Box
8.00 - 12.0	HMI W01 SS	3/4"	216.00	50
12.0 - 16.0	HMI W01 S	3/4"	240.00	36
16.5 - 18.0	HMI W01	3/4"	272.00	30
16.5 - 18.0	HMI W01 A	1"	311.00	30
18.5 - 20.0	HMI W02	1"	354.00	25
18.5 - 20.0	HMI W02 A	3/4"	363.00	25
20.5 - 23.0	HMI W03	1"	376.00	25
23.5 - 26.0	HMI W04	1"	484.00	15
23.5 - 26.0	HMI W04 A	1.1/4"	543.00	15
26.5 - 30.0	HMI W05	1.1/4"	598.00	18
26.5 - 30.0	HMI W05 A	1.1/2"	636.00	18
30.5 - 33.0	HMI W06	1.1/2"	848.00	9
30.5 - 33.0	HMI W06 A	1.1/4"	869.00	9
33.5 - 37.0	HMI W07	1.1/2"	984.00	12
37.5 - 41.0	HMI W08	2"	1237.00	9
41.5 - 46.0	HMI W09	2"	1448.00	8
46.5 - 52.0	HMI W010	2"	1589.00	6
46.5 - 52.0	HMI W010 A	2.1/2"	1775.00	6
52.1 - 54.0	HMI W011 S	2.1/2"	2322.00	4
54.0 - 60.0	HMI W011	2.1/2"	2341.00	4
60.5 - 66.0	HMI W012	3"	2782.00	2
66.1 - 72.0	HMI W013 S	3"	3572.00	2
72.0 - 78.0	HMI W013	3.1/4"	3718.00	2
78.5 - 84.0	HMI W014	3.1/2"	4266.00	1
84.5 - 92.0	HMI W015	4"	6137.00	1
92.5 - 104.0	HMI W016	4.1/2"	7026.00	1

Size Code	RATE PER PCS	Packing Per Box	Pvc Shroud Price	Brass Earth Tag Price
HMI F01 SS	279.00	36	9.00	16.00
HMI F01 S	298.00	30	9.00	16.00
HMI F01	333.00	24	10.00	16.00
HMI F01 A	360.00	24	10.00	22.00
HMI F02	433.00	25	14.00	22.00
HMI F02 A	453.00	25	14.00	16.00
HMI F03	488.00	25	14.00	22.00
HMI F04	605.00	15	17.00	22.00
HMI F04 A	678.00	15	17.00	32.00
HMI F05	716.00	18	21.00	32.00
HMI F05 A	757.00	18	21.00	45.00
HMI F06	1012.00	9	32.00	45.00
HMI F06 A	1058.00	9	32.00	32.00
HMI F07	1137.00	6	40.00	45.00
HMI F08	1430.00	8	48.00	54.00
HMI F09	1629.00	8	48.00	54.00
HMI F010	1836.00	6	56.00	54.00
HMI F010 A	2027.00	6	56.00	87.00
HMI F011 S	2565.00	4	81.00	87.00
HMI F011	2578.00	4	81.00	87.00
HMI F012	3102.00	2	98.00	126.00
HMI F013 S	3774.00	2	129.00	126.00
HMI F013	4072.00	2	129.00	243.00
HMI F014	4752.00	1	129.00	243.00
HMI F015	6514.00	1	145.00	284.00
HMI F016	7341.00	1	176.00	

NOTES : OUR CABLE GLANDS INSIST FOR LASAR MARKING WITH HOLOGRAM SECURITY LABLE FOR THE GENUINENESS OF OUR PRODUCTS



HMI MAKE BRASS CABLE GLANDS

BRASS FLANGE TYPE CABLE GLANDS



WEATHER PROOF DOUBLE COMPRESSION BRASS CABLE GLANDS (CIMFR APPROVED) FOR UNARMORED CABLES



Suitable Cable OD (MM)	Size Code	RATE PER PCS	Packing Per Box
13.0 - 16.5	5	126.00	72
17.0 - 19.0	4	144.00	40
19.5 - 21.0	3	157.00	48
21.5 - 24.0	2	197.00	24
24.5 - 29.0	1	236.00	24
29.5 - 33.0	11	282.00	18
33.5 - 36.0	0	344.00	18
36.5 - 39.0	00	404.00	16
39.5 - 42.0	38	439.00	12
42.5 - 48.0	001	518.00	12
48.5 - 52.0	002	617.00	12
52.5 - 58.0	003	658.00	12
58.5 - 67.0	0033	810.00	8
67.5 - 77.0	004	1046.00	8
77.5 - 86.5	005	1310.00	6

Suitable Cable OD (MM)	Size Code	NIPPLE THREAD ET	RATE PER PCS	Packing Per Box	Pvc Shroud Price	Brass Earth Tag Price
6.00 - 12.5	HMI W01 SS UN	3/4"	188.00	50	9.00	16.00
12.6 - 14.0	HMI W01 S UN	3/4"	225.00	36	9.00	16.00
14.1 - 17.0	HMI W01 A UN	1"	273.00	30	10.00	22.00
17.1 - 19.0	HMI W02 UN	1"	328.00	25	14.00	22.00
19.1 - 22.0	HMI W03 UN	M28	355.00	25	14.00	32.00
22.1 - 25.0	HMI W04 A UN	1.1/4"	510.00	15	17.00	32.00
25.1 - 29.0	HMI W05 A UN	1.1/2"	560.00	18	21.00	45.00
29.1 - 32.0	HMI W06 A UN	M40	788.00	9	32.00	45.00
32.1 - 35.0	HMI W07 UN	M42	909.00	12	40.00	54.00
35.1 - 40.0	HMI W08 UN	2"	1139.00	9	48.00	54.00
40.1 - 43.0	HMI W09 UN	2"	1346.00	8	48.00	54.00
43.1 - 51.0	HMI W010 A UN	2.1/2"	1692.00	6	56.00	87.00
51.1 - 59.0	HMI W011 S UN	M70	2185.00	4	81.00	126.00
59.1 - 65.0	HMI W012 UN	3"	2533.00	2	98.00	126.00
65.1 - 71.0	HMI W013 UN	3.1/4"	3283.00	2	129.00	243.00
71.1 - 79.0	HMI W014 UN	3.1/2"	4002.00	1	129.00	243.00
79.1 - 89.0	HMI W015 UN	4"	5880.00	1	145.00	284.00

NOTES : OUR CABLE GLANDS INSIST FOR LASAR MARKING WITH HOLOGRAM SECURITY LABLE FOR THE GENUINENESS OF OUR PRODUCTS



HMI MAKE BRASS CABLE GLANDS

IP 68 BRASS CABLE GLANDS - PG THREAD

Suitable Cable OD (MM)	Size Code	RATE PER PCS	Packing Per Box
3 - 6.5	HMI PG 7	47.00	300
4 - 08	HMI PG 9	61.00	200
5 - 10	HMI PG 11	85.00	180
6 - 12	HMI PG 13.5	97.00	126
10 - 14	HMI PG 16	107.00	200
13 - 17	HMI PG 21	165.00	40
18 - 25	HMI PG 29	313.00	24
22 - 32	HMI PG 36	455.00	14
30 - 38	HMI PG 42	641.00	6
34 - 44	HMI PG 48	885.00	6



IP 68 BRASS CABLE GLANDS - METRIC THREAD

Suitable Cable OD (MM)	Size Code	RATE PER PCS	Packing Per Box
2 - 2.5	HMI M 12	50.00	300
4.5 - 9	HMI M 16	83.00	200
6 - 12	HMI M 20	109.00	126
10 - 16	HMI M 25	164.00	40
14 - 21	HMI M 32	246.00	40
18 - 28	HMI M 40	440.00	24
26 - 35	HMI M 50	755.00	6
35 - 48	HMI M 63	967.00	6
48 - 63	HMI M 75	1778.00	2

DOUBLE COMPRESSION BRASS CABLE GLANDS- NPT THREAD



Suitable Cable OD (MM)	Size Code	RATE PER PCS	Packing Per Box
14.0 -16.0	HMI 1/2" NPT	239.00	30
17.0 - 18.5	HMI 3/4" NPT	323.00	30
20.5 -23.0	HMI 1" NPT	438.00	25
27.5 - 31.0	HMI 1.1/4" NPT	921.00	12
34.5 - 37.0	HMI 1.1/2" NPT	1136.00	9

BRASS STOPING PLUG - NPT THREAD



Size Code	RATE PER PCS	Packing Per Box
HMI 1/2" NPT	78.00	100
HMI 3/4" NPT	130.00	108
HMI 1" NPT	205.00	50
HMI 1.1/4" NPT	404.00	33
HMI 1.1/2" NPT	657.00	26

NOTES : OUR CABLE GLANDS INSIST FOR LASAR MARKING WITH HOLOGRAM SECURITY LABLE FOR THE GENUINENESS OF OUR PRODUCTS



BRASS REDUCER - ET THREAD



Size Code	RATE PER PCS	Packing Per Box
1/2" X 3/4"	31.00	150
3/4" X 1"	79.00	100
3/4" X 1.1/4"	228.00	72
1" X 1.1/8"	99.00	80
1" X 1.1/4"	113.00	72
1" X 1.1/2"	370.00	36
1.1/4" X 1.1/2"	217.00	36
1.1/2" X 2"	568.00	18
2" X 2.1/2"	804.00	15
3" X 2.1/2"	846.00	12

BRASS STOPING PLUG - ET THREAD



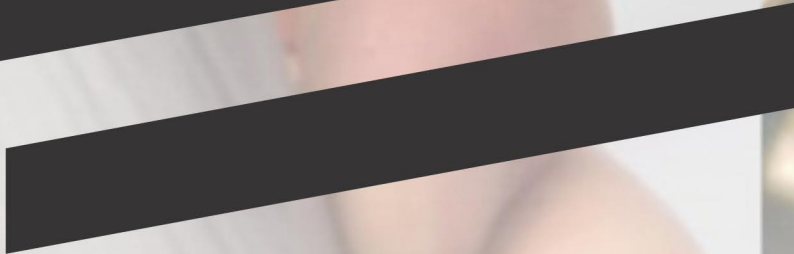
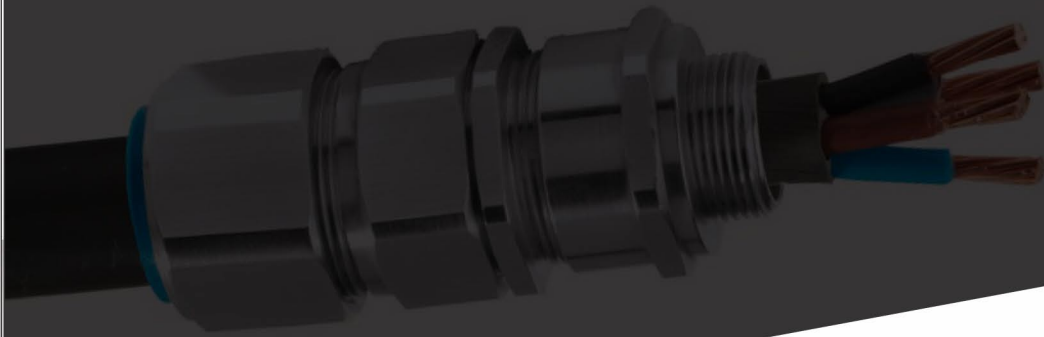
Size Code	RATE PER PCS	Packing Per Box
1/2"	34.00	200
5/8"	39.00	200
3/4"	44.00	200
1"	79.00	120
1.1/4"	156.00	72
1.1/2"	277.00	36
2"	422.00	18
3"	1191.00	12

BUSINESS TERMS

- RATES QUOTED ABOVE ARE ON THE BASES OF F.O.R. JAMNAGAR ONLY.
- ALL TAXES AND CHARGES SHALL BE CHARGED EXTRA AT APPLICABLE RATES.
- ALL ORDERS ARE SUBJECT TO OUR FINAL CONFIRMATION IN WRITING.
- RATES ARE SUBJECT TO CHANGE WITHOUT PRIOR NOTICE.
- ALL SUPPLIES SHALL BE EFFECTED AT THE RATES WHICH MAY BE PREVAILING AT THE TIME OF DELIVERY AS THE PRICES OF MATERIALS ARE BEING FLUCTUATED FROM TIME TO TIME.
- THIS PRICE LIST CANCELS ALL OUR PREVIOUS LIST AND QUOTATIONS.
- AS PER THE TERMS AGREED , PAYMENT SHALL HAVE TO BE MADE WITHIN THE PRESCRIBED TIME LIMITED.
- DELAY IN PAYMENT WILL BE A CAUSE FOR US TO CANCEL ALL YOUR PENDING ORDERS.
- IN CASE OF DISPUTE , ONLY JAMNAGAR COURT SHALL HAVE JURISDICTION.

NOTES :

OUR CABLE GLANDS INSIST FOR LASAR MARKING WITH HOLOGRAM SECURITY LABEL FOR THE GENUINENESS OF OUR PRODUCTS FOR SELECTION OF CABLE GLANDS PLEASE REFER OUR GLANDS SELECTION CHART



📍 Plot No. 408/1, G.I.D.C. Shanker Tekri,
Jamnagar - 361004 Gujarat - INDIA.

☎️ +91 288 2730 681 / 2 / 3 / 256 0030

📞 +91 99 2524 2441 / 93 7700 3004

✉️ manishhirpara437@gmail.com

✉️ bharati_ad1@bsnl.in

